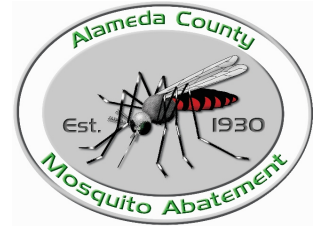


Alameda County Mosquito Abatement District

Serving Residents of
Alameda County Since 1930

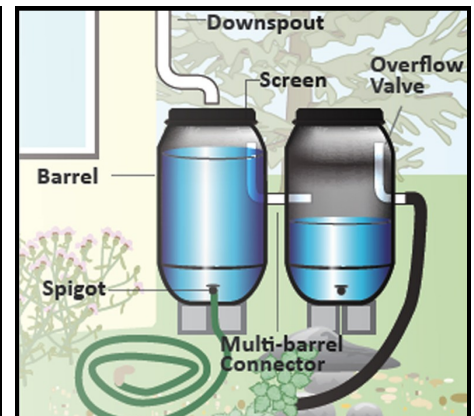


Reuse & Recycle Water RESPONSIBLY

It is a fact that mosquitoes need standing water to develop and that they have the capability to transmit disease to humans and animals. It is also a fact that water conservation is extremely important as communities face the threat of water shortages caused by drought and waste. However, we must not forget the responsibility of maintaining an environment that does not harm or affect human health. By following simple mosquito-proofing tips for common water conservation methods we can not only protect the environment but most importantly protect human health.

Rain Barrels

- Use a rain barrel with a mosquito-proof screen (fine mesh—1/16th of an inch) under the lid and covering the overflow hole.
- Keep rain barrel lid and all connectors sealed.
- If possible, place your rain barrel on a surface that will soak up water that has overflowed.
- Keep your barrel free of organic materials such as leaves and debris.
- Remove water that may have pooled on the top of the barrel at least 1 to 2 times a week.



- Consider the use of a down spout diverter to direct water into the barrel.
- Inspect on a regular basis to be sure there are no cracks or leaks and that all seals and fittings remain intact.
- Keep gutters and downspouts clean and free of debris.

Alameda County Mosquito Abatement District

Serving Residents of
Alameda County Since 1930

Alameda County Mosquito
Abatement District

www.mosquitoes.org

23187 Connecticut St.
Hayward, CA 94545

Phone: 510-783-7744

Fax: 510-783-3903

E-mail: acmad@mosquitoes.org

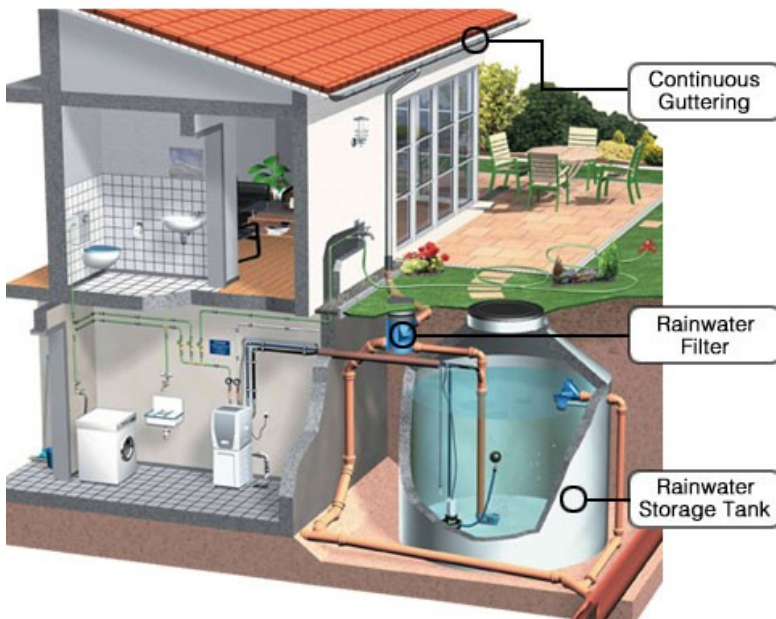


Water Tanks (Cisterns)

- Cisterns (above ground and below ground) should be completely enclosed with no openings to the outside environment.
- Tightly seal cistern lids and connections.
- Cover all inlets, outlets, and vents with fine mesh screening (1/16 of an inch).
- Keep gutters and downspouts clean and free of debris.
- Inspect on a regular basis to be sure there are no cracks or leaks and that all seals and fittings remain intact.
- The area surrounding the cistern should be designed to either divert or absorb excess water from overflow.
- The inside of the cistern must be accessible for periodic maintenance as well as inspection by mosquito control personnel.

Containers

- Cover containers with fine mesh screening (1/16th of an inch) to exclude adult mosquitoes OR
- Cover the top with a tight fitting lid when it isn't raining.



CA Plumbing Code—Chapter 17 NONPOTABLE RAINWATER CATCHMENT SYSTEMS

1702.9.5.6(A) Animals and Insects. Rainwater tank openings shall be protected to prevent the entrance of insects, birds, or rodents into the tank and piping systems. Screens installed on vent pipes, inlets, and overflow pipes shall have an aperture of not greater than 1/16 of an inch (1.6mm) and shall be close fitting.