

#9  
Glue this square



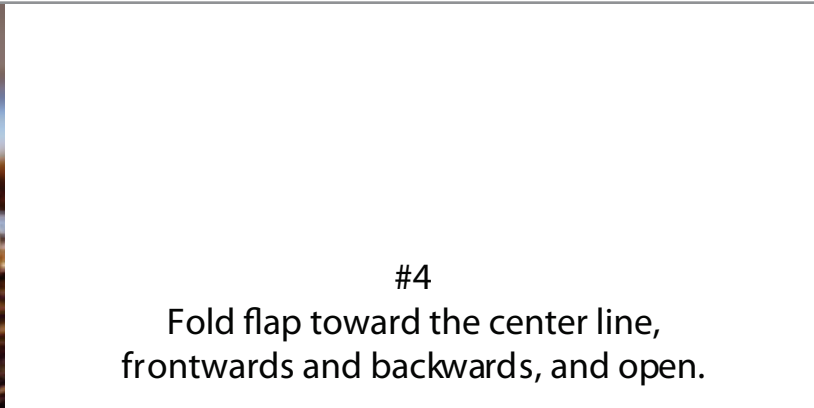
to this square



Fold flap toward the center line,  
frontwards and backwards, and open.

#3

#2  
Fold in half along this line,  
frontwards and backwards, and open.



to this square

#4  
Fold flap toward the center line,  
frontwards and backwards, and open.



#10  
Glue this square

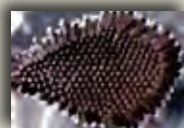
#1  
Cut along dotted line



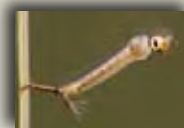
### The Life cycle of Mosquitoes (Culex pipiens) – A Flexagon

Follow steps numbered 1 through 12 on both sides of this page, and you will have a fun, moveable diagram showing the life cycle of mosquitoes. Keep this strip of paper so you can read more about them on the other side.

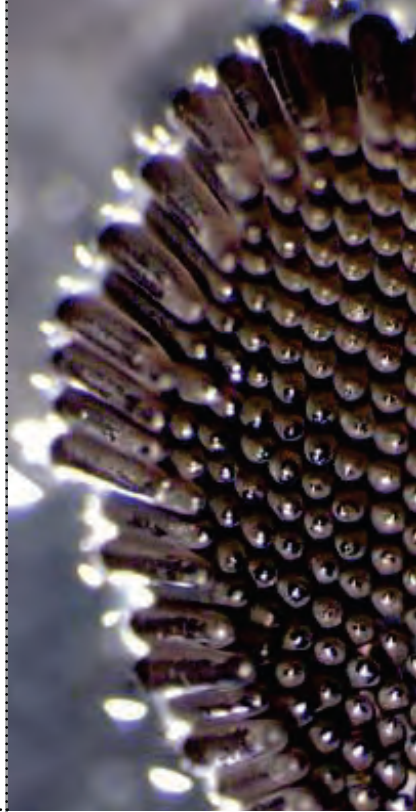
The mosquito egg can develop into an adult within one week, undergoing four stages:



**Egg** - The female Culex Mosquito lays a batch of eggs in fresh or stagnant water. 200 to 300 tiny, dark, tapered eggs are stuck together in a raft that looks like a speck of dirt floating on the water.



**Larva** - The eggs hatch into cylindrical larvae ("wigglers"). They live in water where they eat algae and small organisms, and come to the surface to breathe. Larvae molt (shed their skin) four times as they grow. A neglected swimming pool can harbor millions of mosquito larvae.



#12  
Glue this square



to this square



#9

Fold flap toward the center line, frontwards and backwards, and open.

#5

Fold in half along this line, frontwards and backwards, and open.

#11  
Glue this square



#8  
Cut out the middle 4 squares created by the fold, along the dotted lines. Discard.

#7

Fold flap toward the center line, frontwards and backwards, and open.



to this square



Photos Courtesy of M.J. Higgins



**Pupa** - The mosquito pupa or "tumbler" cannot eat, and breathe through two tubes on its back. The mosquito grows inside the pupa case, emerging after 2 to 4 days as an adult mosquito.



**Adult** - After the adult mosquito emerges from the pupa, it will mate, the female will need to obtain blood to produce eggs and the cycle begins again...This is the stage where mosquitoes can transmit West Nile Virus and other diseases to humans.



510-783-7744  
www.mosquitoes.org